

# Brooklyn NEIGHBORHOOD NEWS

November/December, 2010



## Brooklyn Neighborhood General Meeting

Wednesday, November 17, 2010  
7pm

Sacred Heart Villa Hall, Corner of  
SE Milwaukie and Center

Guest Mike Pullen from  
Multnomah County will address the  
Sellwood Bridge Project.

### Brooklyn Neighborhood Updates

*Meet your neighbors and bring your ideas,  
concerns and vision for the Brooklyn neighborhood.*

Check out the Brooklyn website  
for the latest information:  
[brooklyn-neighborhood.org](http://brooklyn-neighborhood.org)

### BASKET RAFFLE & MINI BAZAAR

A Fundraiser for Thelma Skelton Center  
(Meals on Wheels People)  
SE Milwaukie Ave & Center  
Friday Preview, Dec. 10, 4-5pm  
Saturday Dec. 11, 9 am-4 pm

The Center plans to have baskets available for  
viewing after Dec. 1st. Baskets are filled with  
goodies from local merchants and handcrafted  
items from neighborhood artists.

Festive winter snacks & live entertainment.  
EVERYONE WELCOME!

## THANK YOU from the BAC

Special thanks goes to the following neighborhood  
businesses that supported the  
2010 Ice Cream Social in the Park.

- ◆ Fred Meyer for supplying a gift card for most of the ice cream.
- ◆ Tastebud, Sanborns, The Original Hot Cake House, Berlin Inn, True Brew, Chantiques, Brooklyn Park Pub, Semaphore, Brooklyn Acupuncture, Elemental Arts and Bushwhacker Cider for gift certificates raffled off to the adults.

- ◆ Sacred Heart Church for use of chairs and benches.
- ◆ D&H Flagging for loan of the safety cones.

The BAC also thanks the **many neighborhood volunteers** that made it all possible:

- ◆ Ice Cream Booth: Tanja Olson, Dee Dudek, Maria Young, Daryl and Marie Phillippi
- ◆ Set Up and Take Down: Rick Graves and Daryl Phillippi
- ◆ Supervising Obstacle Course: Tony Sciola, Lyn Lawrence, John Dudek and Jeff Kleen

The Ice Cream Social could not happen without **YOU!**  
Check out the pictures on page 3.

## IMPORTANT INFORMATION

Officer Eric Weber frequently attends the General Meetings. His work schedule is Sunday through Thursday, 4pm - 2am. **DO NOT CALL OFFICER WEBER IF YOU NEED IMMEDIATE HELP OR TO REPORT A CRIME IN PROCESS. CALL 911.** His direct phone number is 503/545-3392.

## Calendar of Events

**BAC Board Meeting**  
Wednesday, November 10, 2010  
6:30 - 9 pm  
Sacred Heart Villa Hall  
Milwaukie & Center

**Neighborhood General Meeting**  
Wednesday, November 17, 2010  
Sacred Heart Villa Hall at 7 pm

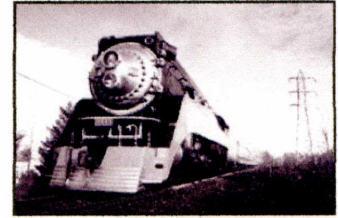
**Bushwhacker Brooklyn Sweep Up**  
Saturday, November 20 at 11 am  
1212-D SE Powell

**BAC Board Meeting**  
Wednesday, December 8, 2010  
6:30 - 9 pm  
Sacred Heart Villa Hall

**Loaves and Fishes Bazaar**  
December 10, 2010  
Corner of Milwaukie and Center  
9 am - 4 pm

## HOLIDAY EXPRESS, 2010

**Dec. 3-5 & 10-12**  
**Friday: 2 pm - 8 pm**  
**Saturday & Sunday:**  
**10 am - 8 pm**



**Cost: \$16 Adult; \$10 Children ages 3-12**  
For more information and tickets, check out  
**[TicketsWest.com](#) or [www.orhf.org](#)**

This year the SPS700 and SP4449 will be departing from Oaks Park Station. The Holiday Express is the primary fundraising activity of the Oregon Rail Heritage Foundation to create a permanent home for these historic locomotives. Bring the whole family to meet Santa and ride the rails with live steam.



## BUSHWHACKER BROOKLYN SWEEP UP

**Saturday, November 20, 11 am**

Don't miss a fun time cleaning up the neighborhood.

Meet at Bushwhacker Cider 1212-D SE Powell and receive bags, gloves, and complimentary hot spiced (non-alcoholic) cider.

Afterwards, starting at 1 pm, join us and our friends from Blue Mountain Cider, to sip some samples of several seasonal ciders.

## INTERESTED IN A NEIGHBORHOOD PLAY GROUP?

Have you noticed how many young kids and families we have in Brooklyn? Would you love for your kids to have some playmates right in their own neighborhood? Chris Wheeler is organizing a few play groups for gathering in homes or in the "big room" at the new kids resale/consignment shop "Daisies and Dinosaurs" on Milwaukie.

If you have children and are interested in participating in a play group, please e-mail Chris at [nelson.wheeler@gmail.com](mailto:nelson.wheeler@gmail.com). In your e-mail, please include the ages of your kids, any day/time preferences and if you'd be willing to host a play group in your home.



## BROOKLYN HELP LINE 503/241-4540

The Helpline is always available for the Brooklyn neighborhood to voice their concerns or pass on information to the Brooklyn Action Corps.



### ◆ ◆ ◆ ◆ Brooklyn Neighborhood News

is published bi-monthly by the BAC. To contact the Brooklyn News, call the helpline or email the newsletter at [brooknews@brooklyn-neighborhood.org](mailto:brooknews@brooklyn-neighborhood.org)

Community announcements, local events and press releases are accepted on a space available basis. Closing date for the newsletter is on the 15th of even-numbered months. This newsletter is edited and designed by Marie Phillippi.

# 2010 "ICE CREAM SOCIAL IN THE PARK"

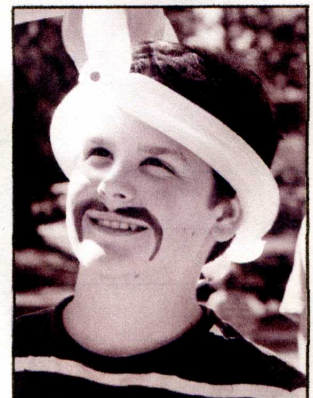
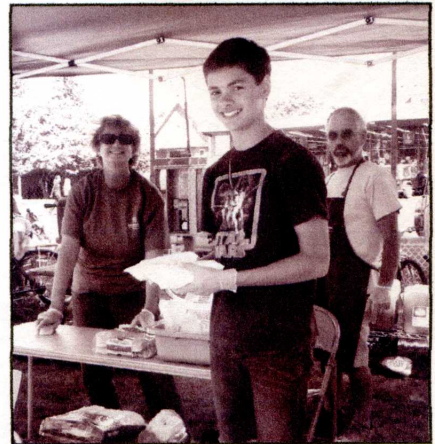
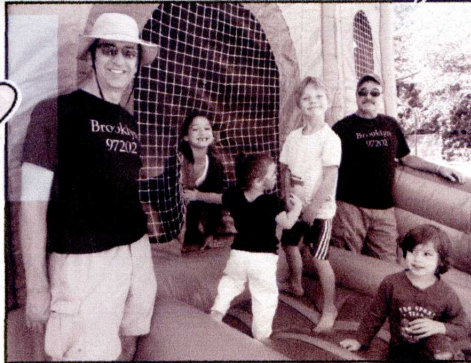
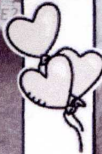
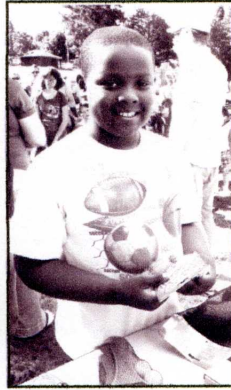


Photo: Tanja Olson  
All other photos: Marie Phillippi

Thanks to all who came and enjoyed being with family, friends and neighbors.

Photo: Tanja Olson

Photo: Tanja Olson

## BROOKLYN BUSINESS FOCUS

### Brooklyn Community Acupuncture

1212 SE Powell, Phone: 503/233-4341

Lily has worked in Brooklyn since May, 2009 and has taken over as manager since March. The Brooklyn Community Acupuncture was built on community outreach so they see their mission as keeping services affordable and accessible to everyone. Fees are on a sliding scale starting at \$20.

Besides offering Acupuncture, services of Massage Therapy and Naturopathic Medicine are also available. Virtually any ailments can be treated, as well as help in preventive care.



*Lily Haboush, Acupuncturist  
and new manager of the  
Brooklyn Community  
Acupuncture*

A variety of care providers, 5 acupuncturists, 5 massage therapists and 1 naturopathic physician are available, so everyone can choose the person that best fits their needs. Lily hopes the community will “see us as a resource” and offers a standing invitation to all Brooklyn residents to come in and look around.

Hours: 7 days a week, Monday through Friday: 11 am - 7 pm; Saturday and Sunday: 9 am - 2 pm. Walkins are accepted. Check out their website at [brooklyncommunityacupuncture.com](http://brooklyncommunityacupuncture.com)

## BROOKLYN NEIGHBORHOOD RECEIVES GRANT

The City of Portland’s Office of Neighborhood Involvement has allocated funds to SE Uplift for management of a new Graffiti Abatement Community Grant Program for 2010-2011. Grant funds totaling \$8486 were made available to neighborhood associations, businesses and community-based organizations for projects with an emphasis on graffiti prevention, graffiti abatement and/or addressing locations chronically tagged with graffiti. Seven community projects were funded and the Brooklyn Action Corps was one of them!

Projects earmarked to receive attention are the Brooklyn Pedestrian Bridge Mural, Landscaping Facelift and Graffiti Cleanup Kit Project. The amount requested was \$2500. The actual grant funded was \$2046. The funds will be used to improve the 9th Avenue pedestrian/ bike overpass at SE Powell Boulevard, a key north-south arterial for pedestrians and bicyclists. The project consists of three components, which include the installation of a mural treated with a clear coat to prevent tagging, landscaping improvements and a graffiti response and removal kit.

For more information, check out the Brooklyn Neighborhood website at: [brooklyn-neighborhood.org](http://brooklyn-neighborhood.org)

## The Original Living Christmas Tree Company

The potted Christmas tree company of Portland makes it easy for folks to have the greenest Christmas trees! Delivered to your home are full size potted trees that eventually grow old in watersheds. Potted-and-planted trees are best for the environment because they clean the air every day for years after Christmas.

Here’s how it works: Folks order a christmas tree through their website, [livingchristmastrees.org](http://livingchristmastrees.org). TOLCTC delivers potted full-size evergreen trees to residences and businesses. They pick up the trees after New Years and are planted by groups such as parks



departments, schools and private landowners. The trees are planted to grow old. The cost Christmas trees top out at \$100. They are naturally shaped, not sheered into cones. They are easy to care for and each tree has a deposit check to make sure planters get quality trees.

Living Christmas trees are 6' or 7.5' size. Clients can choose from ten kinds of cedar, juniper, pine, spruce and fir. The main tree offered is the Douglas fir, the State Tree of Oregon and the most popular tree worldwide. If interested, check out their website: [livingchristmastrees.org](http://livingchristmastrees.org).